

innovation⁴



education

technology for college education



Have
your logo
below!

we can rebrand this
brochure for you
See page 2

Follow us on



midwich

midwich.com

01379 649200

interested in a rebrand?

Should you wish to offer this brochure to your customers, we can rebrand it for you using your own company name, logo and contact details. Contact marketing for a quote on **01379 649395**.



 #MidwichEducation

Welcome to your new Higher Education Guide, offering a comprehensive round-up of all the latest technologies and innovations for the higher education spectrum, from lecture halls to student common rooms. Here you can delve into a wide range of products and solutions that help to make today's higher education establishments run at peak efficiency.

Welcome to Innovation	
4 Higher education.....	2
Lecture halls	3
Common rooms	4
Libraries	6
Specialist classrooms	8
Staff rooms	10

To discuss further the full range of technological opportunities we can provide, call our specialist sales team on **01379 649200** or visit **www.midwich.com**.

Look out for further brochures targeting additional markets within the education sector including:



primary
education



secondary
education



university
education



technology for lecture halls

AV technology enhances any lecture or presentation, bringing them to life with high definition displays and crystal-clear audio. Collaborate with pupils and students like never before by allowing them to interact through striking Full HD content, bright impactful images and much, much more.



Sophisticated and innovative, a lecturer's ideal presentation partner

The Hitachi CP-EX250N 3LCD projector offers true-to-life, vibrant and consistent images, perfect for maintaining student engagement. With the 'My Button' function, this projector allows lecturers to assign custom functions or common tasks to a programmable button on the remote control.

HITCPEX250N

HITACHI
Inspire the Next



Looking for a suitable lamp?

For competitive pricing and a huge vendor stock holding, call 01379 646898.

Complete the solution...

...with the PEERPRSSUNVW projector mount for projectors up to 50lb (22kg).



Stylishly thin with big impact results

Featuring a slim chassis and 11mm bezel to bezel, the Samsung UE55D allows for beautiful video content to be displayed in full HD with no PC, DVD or SBB required, perfect for holding the attention of students in lesson time without the hassle of pre-wiring any additional hardware. Built-in Wi-Fi allows for easy mobile control and increased Daisy Chain capability.

SMUE55D

SAMSUNG



Looking for a suitable bracket?

A modular mount for unlimited videowall display configurations with custom wall plate spacers, eliminating the guesswork and on-site installation calculations. Perfect for screens ranging from 40 to 65-inch.

PEERDSVW765LAND (+SPACER)

peerless



Emergency evacuations are kept under control with TOA

This EN54 rated ceiling speaker features an iron-made dome that prevents the fire from spreading in the ceiling in case of an emergency situation, keeping students safe and secure when it matters most. Listen to high-quality sound knowing that students are safe while learning.

TOAPC1867FC



TOA

Complete the solution...

...with the TOAVM3240VA highly cost-effective combined emergency voice alarm system and public address system.



TOA



"New research from the British Educational Suppliers Association (BESA) shows that **50%** of all UK state schools do not have sufficient access to ICT and computers."

Source: BESA research - <http://www.besa.org.uk>

want to find out more? call the Midwich sales team on **01379 649200** www.midwich.com



technology for

common rooms

It's no secret that higher education is not all work and no play, so kit out common rooms with the latest consumer TVs, home audio speakers and stylish headphones for an all-round relaxing environment. Add in printers, scanners, monitors and more for those students looking for a quiet and peaceful place to get some work done.

Collaborate and communicate whilst saving time and money

Designed for the working environment, the Philips 241P4QPYKES/00 AMVA LED monitor will not only save customers up to 80% on their energy costs through the built-in PowerSensor, it also comes with a pre-installed webcam and microphone, perfect for calling home or discussing lectures with peers.

241P4QPYKES

PHILIPS



The best possible viewing experience

The AQUOS LC60LE751K uses the very latest Sharp image technology, giving the best possible viewing experience, thanks to its natural colours, rich contrast and depth and smooth moving images, no matter whether it's 2D or 3D. The Aquos Net+ portal allows connections to the world of apps and contents. All packed in an elegant, floating design that commands attention.

SHALCDTV60LE751



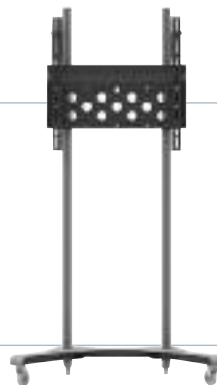
SHARP

Looking to mount this display?

This PMVmount XL TV trolley is ideal for 50 to 90-inch TVs, with extenders available for up to 800mm x 600mm in portrait. Twin extruded aluminium uprights allow for simple assembly and adjustment.

PMVTROLLEYXL

pmvmounts



Looking to get organised?

Designed for modern individuals, this colour scanner is an essential tool for any students' document capture needs. Students can easily scan their work on their mobile devices while the 45ppm speeds means they'll be doing so quickly and efficiently. The Panasonic KV-S1046C-H scanner includes a FREE copy of Panasonic's very own Image Capture Plus software, offering an intuitive user interface.

KVS1046C

Panasonic
ideas for life



want to find out more? call the Midwich sales team on **01379 649200** www.midwich.com

Zone out and chill out
 with these discreet home
 audio speakers

The M1370BT by Edifier is a contemporary 2.1 speaker system that transforms multimedia systems into a trendy accessory. Equipped with Bluetooth, this 2.1 system can be paired with any Bluetooth enabled devices, aiding versatility and satisfying all musical needs.

EDFM1370BT

EDIFIER®



Allow Midwich to offer
 schools with their ideal access
 control requirements

Midwich is a key partner for TDSi, one of the UK's leading access control manufacturers. If you're looking for anything from standard door entry systems to movement logs of staff, visitors and residence, Midwich can help design the ideal solution.

Call our specialist security team today on 01379 647500 to find out more.



Minimal fuss meets
 maximum output

The Lexmark CX510DE colour multifunction printer delivers rich, consistent colour printing with minimal fuss, perfect for students looking for a reliable printing source to meet task deadlines. The vibrant 7-inch colour touchscreen provides access to easy-to-use pre-installed productivity solutions, with a convenient front USB port too.

LEXCX510DE



LEXMARK™

Public sector pricing available

PaperCut™

Listen to audio in style,
 while remaining comfortable

Enjoy Sony quality sound in comfort with these MDRV150 headphones. The 2m cord offers excellent flexibility and the ear cups are reversible for easy single-sided listening. Plus they come with a stereo unimatch plug for use with various audio equipment.

MDRV150

SONY



Bright ultra-short throw
 projector that won't disappoint

With the EB-575Wi's dual pens, it's easy for students to interact with projection. Featuring a brightness level of 2,700 lumens and WXGA resolution, the EB-575Wi's ultra-short-throw design allows students to discover, learn and interact in their own time, while minimising shadows and glare.

EB575WI

EPSON®
 EXCEED YOUR VISION



Looking for a suitable lamp?

For competitive pricing and a huge vendor stock holding, call 01379 646898.



"More than three-quarters of teachers surveyed (76%) are using technology in all or most of their lessons, but only **15%** are totally computer savvy, including interactive whiteboards, according to a report by Virgin Media Business and Generation Tech."

Source: GenerationTech VMB June 2014



technology for libraries

Libraries are key areas for focus and thinking for many college students, so easy access to high-end monitors and powerful printing devices is vital. Being a hub of information, libraries need to have the technologies to support all students and their learning, through projectors, large format screens and monitors.

Multi-touch interactivity that welcomes any student to the library

With a bright LED anti-glare screen and a wide viewing angle, students, teachers and visitors alike will marvel at the Hitachi 65-inch LED 6 point IR touchscreen. Incorporating a host of clever features, such as 4/6 person multi-touch interactivity and the optional built-in PC, this screen eliminates the need for additional software, creating the all-round efficient and simplistic display.

HITLEDFHD6516

HITACHI
Inspire the Next



65"

The best choice at class-leading value

Featuring a brightness of 3,200 ANSI lumens, a high contrast ratio and an XGA resolution, the cost-effective, energy-saving and eco-friendly MX570 projector offers a stunning full-screen viewing with the finest details, regardless of the ambient light level.

Educational pricing available on request, speak to your account manager today.

BENQMX570

5 year De-Re warranty for peace of mind for you and your customers



BenQ

Looking for a suitable lamp?

For competitive pricing and a huge vendor stock holding, call 01379 646898.

Complete the solution...

...with the CHIEFRPEUW pin connection universal projector mount.

CHIEF



Looking to mount this display?



Chief has upgraded the Fusion mounts while keeping installers' favourite benefits. The new fixed and tilt mounts still include Centerless™ lateral shift, ControlZone™ leveling, Centris™ low profile tilt and ClickConnect™ tool-free latching. The latest innovations include set screws, nesting spacers, teardrop design, magnetised ClickConnect, additional lateral shift and security.

CHIEFXSM1U

CHIEF

High volume printing wirelessly

The HL6180DW is a reliable workhorse mono laser printer with secure printing option whilst also using high volume supplies that will reduce school costs. Students can print large essays and research data quickly, while the wireless connection means that students and staff can print without even having access to a desktop PC.

HL6180DWT

brother
at your side

Public sector pricing available

PaperCut

Brother is the UK's No.1* provider of mono laser printers



*GFK data Jan - Dec 2014

A monitor that offers students so much more than the standard

Designed with a remarkable 5M:1 Digital Fine Contrast, 5ms response time and 16.7 million colours, images are rendered with striking effect while text comes through sharp, perfect for creative individuals. A tilt and height adjustable stand and pivot function allows easy rotation from landscape to portrait modes.



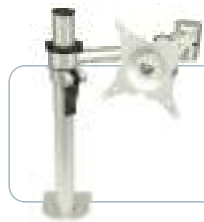
LGE2411PU



Poster board signs and concierge desks? A thing of the past

Replace drab looking notice boards and desks with Peerless-AV's sleek digital signage kiosks. Designed to best support an ultra-thin display, this kiosk is sure to make an impact with library entrants. Whether it's advertising, a digital directory, or way-finding, this solution offers a versatile, up-to-date option.

PEERKIL540S



Complete the solution...

...with the CMS Ergo CMSSINGLE stream single desk mount, for screens up to 26-inches.



Never see a dark iPad screen again with the Loxit iBank

The Loxit iBank Eight Wedge ChargeConnect provides lockable universal USB charging for the management of up to eight devices. Constantly charging library-located iPads allows students to explore the worldwide web, watch videos and broaden their minds through apps and downloads, freely and conveniently, without the need for a desktop machine.



LOX7711



High-quality output meets paper-saving features

Students can print professional colour documents and reduce paper costs by up to 74% through 2-sided printing with the Brother HLL8350CDW. Students can share work files at the touch of a button via the Brother iPrint&Scan, Google Cloud Print and Apple AirPrint apps. This versatile wireless colour laser print will certainly bring student's work, leaflets, posters and newsletters to life.

HLL8350CDW



Public sector pricing available



"London schools launch £72m ICT services 'Lewisham ICT' Framework for Education. Over four years for ICT goods and services will allow organisations in London to buy a vast array of ICT – from tablets, telephone solutions to network infrastructure, interactive classroom services, AV solutions and digital signage."
 Source: Education Executive, October 2014



technology for specialist classrooms

Each classroom has different needs from the next and Midwich can help your customers with a wide plethora of technologies, suitable for cookery classes, media suites, science labs and much, much more. Allows students and staff to interact, print, type and create with ease.

Display school messages interactively and in superb high definition

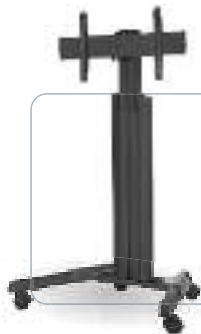
The ProLite TH6564MIS is the perfect solution for educational use. With high-quality image performance and multi-touch functionality, videos, presentations and pupil interactions will flourish. The anti-glare screen drastically reduces ambient reflection, even in the summer sunshine.

IYLCD6564MISAG

Perfect for: media suites, science labs, special education needs and cookery classes



iiyama



Need to make a screen mobile?

The Chief Large FUSION™ Manual Height Adjustable Mobile Cart incorporates rounded edges and sleek features to give the cart a softer professional feel that fits well in any classroom environment.

CHIEFLPAUB

CHIEF

Be a class act with 3D print

Supporting new materials for production (Nylon), engage and hold student interest with three dimensions, stimulating their learning experiences. Tackle difficult concepts with visual and tangible aids with the availability of single, dual or triple print jets, easy setup, wireless connectivity and fast print speeds.

CUBEPRO / CUBEPROTRIO / CUBEPRODUO

View these models at
www.midwich.com/q115edu3dprint



Perfect for: science labs, special education needs, design technology, photography, textiles, graphic design, art classes and CAD cam suites

Cube



Ultra-short-throw never looked so good

The Casio XJ-UT310WN offers users lamp-free laser and LED hybrid light source projection, perfect for even the largest and brightest of classrooms. With a low TCO, minimal maintenance and downtime, staff can focus on their class while the Casio XJ-UT310WN does the hard work for them.

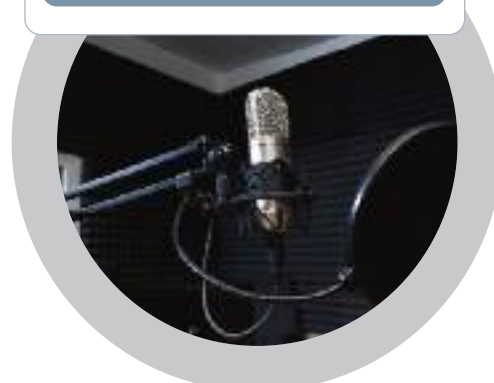
CASIOXJUT310WN

CASIO
PROJECTORS

5 year / 10,000 hour warranty on both hardware and light source plus a FREE bracket



Perfect for: media suites, science labs, special education needs, cookery classes and design technology





Bright, vibrant, colour prints on demand

Public sector pricing available

Offering print, copy, scan and wireless functionality, the Ricoh SG3110SFNW colour multifunction printer can keep up with the hustle and bustle of pupils with fast print out speeds of 29ppm.

With the Smart Device Print&Scan app, pupils can print and scan easily and securely by connecting any mobile devices.

SG3110SFNW

Perfect for: media suites, special education needs, textiles classes and design technology

RICOH

PaperCut[®]

Bright images, high contrast; matched with a toughened exterior

This high quality 21.5-inch LCD monitor has a toughened safety glass fitted behind the bezel, offering an 8H hardness rating, capable of resisting above normal pressure and impacts to the display. The high-end LCD panel with LED backlights offers a bright image with high contrast, engaging students from the moment it's turned on.

IIYP2252HSB

Perfect for: special education needs, graphic design, ICT, media suites, photography, design technology and CAD cam suites



iiyama

Complete the solution...

...with the CMS Ergo CMSSINGLE stream single desk mount, for screens up to 26-inches.



ergo



Click and type all classwork in style

Low profile keyboard, elegant and ergonomic mouse, both offering wireless connectivity – what more could a student wish for? The elegant and ergonomic Air Mouse Elite, brings the intuitive simplicity of motion to any users digital life.

GYR5600LKUK



Perfect for: special education needs, graphic design, ICT and media suites



Value added services

Spending too much time phoning through orders?

You can automate your ordering by linking your computer system to ours, saving time and reducing the potential for error.

Find out more at www.midwich.com/xmlordering



"The UK's domestic education market, with **2.5 million** higher education undergraduates, presents significant opportunities for business looking to provide education related products, services and further expertise."

Source: iZi events, UK education market opportunity, yearend 2014.



technology for staff rooms

As the central hub for all teachers, the staffroom should be a relaxing, yet sophisticated environment, offering leisure features to ease any working day. Plan, prep and organise with ease with our range of high-class products.



Unwind with ease and simplicity in style

Relax and take a moment of free time to discover the LG LB550V 42-inch Full HD LED TV and all its benefits. With built-in Freeview HD and a 2.0 channel speaker system for incredible cinema-like experience, staff can relax over lunch in an instant. An incredible clarity from full HD 1920 x 1080 resolution allows for addictive viewing time and time again.

LGLCD42LB550V



Looking to mount this display?

Ideally suited for extra-large LCD and Plasma screens, the Paramount PF660 flat-to-wall mount allows customers to mount their LCD/Plasma screen quickly and easily. The low profile design holds the screen only 43mm away from the wall.

PEERPF660



peerless®

Connect and communicate with this effective colour multifunctional

A high performing networked multifunctional device with Wi-Fi connectivity and mobile printing. It's easy-to-use and productive features allow focus to remain on the task in hand. Fast print speeds mean staff won't be kept waiting for those important student files, while Apple AirPrint and Google Cloud Print means they can print from any device, at any time, at any place.

MF8580CDW

Canon

PaperCut



Public
sector
pricing
available



Satisfy everyone's musical tastes with ease

With the combination of smooth curves and straight lines, the Exclaim by Edifier is a fully active bi-amped 2.0 speaker system. With built-in Bluetooth, any staff member can blast out their favourites tracks, taking the edge off any hectic day.

EDFE10BT

EDIFIER

Value added services

Who's selling printer consumables to your customers?

Maintain a lucrative revenue stream and stay at the forefront of customers' minds by supplying them with branded consumables.

Find out more at www.midwich.com/consumables

Safety and security
are always top of the list

Surveillance based security is now recognised as a standard requirement for all education establishments and Midwich is able to help from start to finish with assistance on product specification, system design and installation training. Whether an industry expert or new to the market, Midwich is your ideal partner for surveillance solutions.

Call our specialist security team today on 01379 647500 to find out more



Lightweight stereo headset
for easy multi-tasking

With a flexibly adjustable microphone, this stereo headset is perfect for staff members who require video / telephone conferences. With a 3.5mm jack plug and a lightweight headset, moving around the desk whilst on a call and typing up critical information is done with ease and simplicity.

HAMA00029188



Advanced document processing
meets time saving functions

With a large 300-page automatic document feeder and advanced hardware image processing to increase productivity, the Panasonic KVS5046HS high-speed document scanner makes scanning, rescanning and even the most complex scanner tasks seem simple.

KVS5046HS



Optimal viewing comfort
for writing, typing and watching

Height adjustability and screen rotation allows users to set the perfect position of the screen, ensuring ergonomic posture and optimal viewing comfort for essays, research or reading. Triple input support of analogue, DVI and HDMI ensures compatibility with the latest installed graphics cards and embedded Notebook outputs as well as being Energy Star Certified.

IIBY2280HSB



Complete the solution...

...with the CMS Ergo CMSSINGLE stream single desk mount, for screens up to 26-inches.



Streamline office tasks easily
with 3-in-1 versatility

Waiting too long for pupil reports and documentation? The Samsung CLX-6260ND printer streamlines any staffroom workflow through fast first print out times and scan-to-email functionality. With Samsung's unique ReCP Technology, school displays will never be the same again.

CLX-6260ND/SEE



"45 percent" of Bett visitors in 2013 were from Secondary and Further Education."

Source: i2i events, UK education market opportunity, year end 2014.



Speak to the experts

We trust that you can clearly see the difference that Midwich delivers when it comes to working with you.

Our dedicated specialist sales support teams are here to answer any questions you may have, help you identify the right solutions for your customer, arrange demonstrations, training or even support you through delivering information for tenders or special bids you may be working on.

Why not utilise our expertise?
Give us a call on 01379 649200 or visit
midwich.com/about/specialists

midwich
midwichgroup.com

Contact our dedicated sales team on
01379 649200
or visit www.midwich.com