



SPRING/SUMMER 2016

YOUR NEC VIDEO WALL GUIDE



Video variety

Discover just some of the exciting applications for video walls

Greener than you think

Find out about NEC's eco focus

Orchestrating a brighter world

NEC

YOUR GUIDE TO

NEC VIDEO WALLS

Established in 1899 at the Nippon Electricity Company with the aim of supplying its clients with world-class products and an excellent follow-up service, NEC is now a globally renowned AV brand.

For more than a century, NEC has grown and evolved, always with an eye on being the world leader, not least in display solutions. Its experience in the video wall market means its product range is continuously developing to reduce both purchase and running costs, making installation easier and enhancing image quality.

As a result, NEC's high-impact video walls have found application in the retail, hospitality, control rooms, signage, rental, corporate and transport sectors.

And with a 2015 report by JSB Market Research predicting that the market may double by 2020, there has never been a better time to invest in video wall technology.

Striking solutions

Our range of video wall screens encompasses the best of the NEC range. Each one features a Full-HD, 1080p, backlit LED display for impressive – and reliable – picture quality.

Set them up as a daisy chain to show one consistent image over the entire wall, or individually to display different content. With barely visible slim bezels, they allow for uninterrupted, immersive viewing. Plus, with high levels of connectivity, they allow for creative solutions and flexibility. They even incorporate innovative near-field communication sensors, which work with the NEC Android app to dramatically reduce installation and maintenance times.

And even though they can be operational 24/7, each one has low power consumption, heat controls, an ECOMode, in-built carbon savings meter and have an energy efficiency rating of B.



MultiSync® X464UNS
Screen size
 46-inch
Bezel size
 3.5mm
Brightness [cd/m²]
 700
[VIEW NOW](#)



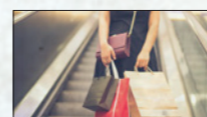
MultiSync® X554UNS*
Screen size
 55-inch
Bezel size
 3.5mm
Brightness [cd/m²]
 700
[VIEW NOW](#)



MultiSync® X464UNV-2
Screen size
 46-inch
Bezel size
 5.6mm
Brightness [cd/m²]
 500
[VIEW NOW](#)



MultiSync® X555UNV
Screen size
 55-inch
Bezel size
 3.5mm
Brightness [cd/m²]
 500
[VIEW NOW](#)



MultiSync® X555UNS
Screen size
 55-inch
Bezel size
 3.5mm
Brightness [cd/m²]
 500
[VIEW NOW](#)



MultiSync® X554UNV
Screen size
 55-inch
Bezel size
 3.5mm
Brightness [cd/m²]
 700
[VIEW NOW](#)



*DICOM support for medical applications

NEC RETAIL

IMPROVING THE
IN-STORE EXPERIENCE

Able to display high-impact, high-colour and high-quality video, it's hardly surprising that video walls have quickly found application in retail markets the world over.

Inspire spending

Video walls can encourage spending behaviour by showing products in real-life situations. If shoppers like what they see, they'll be inspired and more inclined to part with their money – providing excellent return on investment.

Plus, with NEC's screens able to operate 24/7, the video walls can show different messages at different times of day. So when the outlet's shut, shoppers can be driven to an online store, so they never miss a sale.

And unlike traditional in-store signage, they offer a hassle-free way to update visual merchandising. Instead of taking down lots of physical signs, your customers can update the input for each wall quickly and easily.

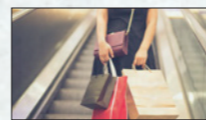
Encourage engagement

The screens can be used to do more than inspire sales though. Content can be used to raise awareness of social media channels, to display user-generated content from fans, live footage or even useful directions and guidance.

Each interaction will increase the likelihood that customers will engage with the brand and increase loyalty and the chances they will return.



**Perfect for
retail environments**



MultiSync® X555UNS

Screen size

55-inch

Bezel size

3.5mm

Brightness [cd/m²]

500

VIEW NOW



Orchestrating a brighter world

NEC

midwich

NEC HOSPITALITY

ARE YOU SITTING
COMFORTABLY?

Whether they're being used in hotels, bars, restaurants or airports, video walls have a broad range of applications with a surprising number of benefits for the end user – as well as your customers. It's little wonder demand for video walls is growing in the hospitality sector.

Welcome guests

Video walls can be employed to greet guests with added wow factor. From displaying a warm welcome message, to interesting information about the local area and useful directions, they create an inclusive modern atmosphere in every environment.

By making guests feel at home, they'll feel more connected to your

customers' brand and more likely to return – boosting loyalty and the bottom line.

Entertainment everywhere

Customer experience is a vital element of the hospitality industry – and what better way to keep people happy than by entertaining them?

From screening the big game to the latest blockbuster, a video wall will enhance customer experience and act as a major draw for social venues. If your customers need to display vital information at the same time – for instance in an airport – the screens can be separated to simultaneously stream a range of content.



Perfect for hospitality environments



MultiSync® X464UNS

Screen size

46-inch

Bezel size

3.5mm

Brightness [cd/m²]

700

[VIEW NOW](#)



NEC CORPORATE

CREATE CORPORATE
COLOUR

While the applications may not be immediately apparent, NEC video walls can be used to great effect in corporate environments. Providing the content displayed is well produced, the walls will have a huge impact on both your internal team and visitors.

Impress everyone

From reception to the boardroom, video walls grab the attention of visitors and employees alike with high quality content.

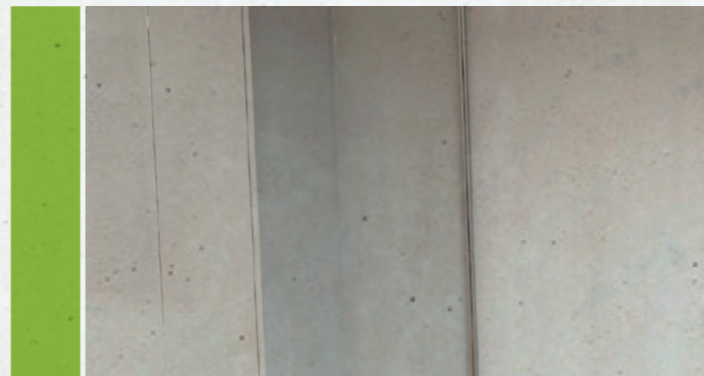
They'll project a fantastic impression of the organisation as an innovative business, willing to invest in the latest technology and content. Employees will be proud

of where they work and visitors will want to return time and again to see what else is new.

Keep focus

Meeting and conference rooms will be enhanced by the installation of an NEC video wall. Attendees will be hooked on high-quality visuals and videos so your customers will hold more effective and efficient meetings.

Between meetings inspiring videos, corporate messages and local information can be displayed for passers-by, making any room instantly more welcoming.



Perfect for corporate environments



MultiSync® X554UNS*

Screen size

55-inch

Bezel size

3.5mm

Brightness [cd/m²]

700

[VIEW NOW](#)



NEC

ENVIRONMENT

GOING GREEN

Although NEC's video walls can operate for 24 hours, seven days a week, they're built with energy efficiency in mind. And because they're low energy, there will also be a low cost of usage. Join us as we look at the innovative technology employed to meet your customers' green credentials.

(Don't) feel the heat

A by-product of generating lots of light is lots of heat, which can make video walls unpleasant to be around.

To overcome this challenge, NEC has developed a unique heat management system. It allows end users to monitor and adjust heat output with in-built fans. Not only will it keep the space cool, but enhance the life and reliability of the video wall.

Green settings

NEC's innovative ECOMode employs a range of features to ensure that the end user doesn't consume too much energy.

But because NEC knows that no two end-users are the same, it allows users to balance the energy consumption with performance, selecting the operational standard that most suits their business.

Plus, with in-built schedulers, the use of power can be minimised by switching off the screens when they are not needed. The MultiSync® XUN Series even has a programmable ambient light sensor which adapts screen brightness based on the environment, reducing power consumption when the screen doesn't need to be as bright, without compromising on the picture.



ACCESSORIES & INSTALLATION

We are the leading specialist in technical video product solutions. Our specialist team is able to help you design and install an entire NEC video wall solution – regardless of the market.

From choosing the most appropriate screens, to selecting the right video processors and signal distribution products, we can help you create the perfect video wall.



BTEBT83712X2BB

Designed for all video wall screens measuring up to 60", the B-Tech stand allows ultimate flexibility in positioning.

With tool-less micro-adjustments at eight points for seamless and simple adjustment, it makes setting up a video wall easy. Plus, with integrated cable management, it'll keep everything looking neat and tidy.

VIEW NOW



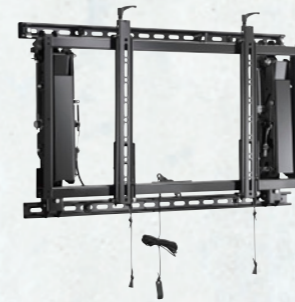
PEERDSVW765LQR

This full-service wall mount is designed for ease of installation and service in recessed positions. With a quick release function, the video wall can be gently moved away from the wall with the touch of the finger – while it can be quickly secured in place with a locking screw.

And with in-built wall plate spacers, positioning is simple, with no guesswork at all.

VIEW NOW

peerless-AV



CHIEFLVS1U

The ConnexSys system overcomes common video wall installation issues, making it quick and simple to set up. Release is just as quick, with a cord system gently popping the screens out of position.

The tool-free ClickConnect system secures displays in place, with no need for horizontal spacers. Plus, the sides of the mount can be adjusted independently to cope with imperfect walls.

VIEW NOW

CHIEF



PEERDSVW6602X2

Suitable for both large and small video walls, this mount simplifies installation. Its modular configuration allows for unlimited configurations, while wall plate spacers makes it easy to get positioning right.

And with the screens sitting flush against the wall and an integrated cable management system, it's low-profile and attractive to look at.

VIEW NOW

peerless-AV

midwich

Orchestrating a brighter world **NEC**

SPRING/SUMMER 2016

BRINGING YOUR VIDEO WALL TOGETHER

Getting the perfect finish for your video wall is simple if you have the right tools.

The KT-LFD-CC2 calibration tool from NEC will ensure you get a seamless, professional finish, fast. All you need is a Windows PC with a LAN and USB port. The calibration tool's colour sensor and specialist software will ensure consistent colours and brightness across your installation – and customer satisfaction every time.

“Did you know a huge 32% of retail video viewers prefer to shop at stores with video displays*?”

ARON BENNETT
NEC Specialist

01379 649387
aron.bennett@midwich.com
www.midwich.com

*VAGlobal: 4 emerging trends in digital signage

OUR EXPERTISE IS YOUR ADVANTAGE



Terms & Conditions. All trademarks are the property of their respective manufacturers. Your calls may be recorded for training purposes. Copyright © Midwich Limited 2016. Midwich Limited, Vinces Road, Diss, Norfolk, IP22 4YT.

